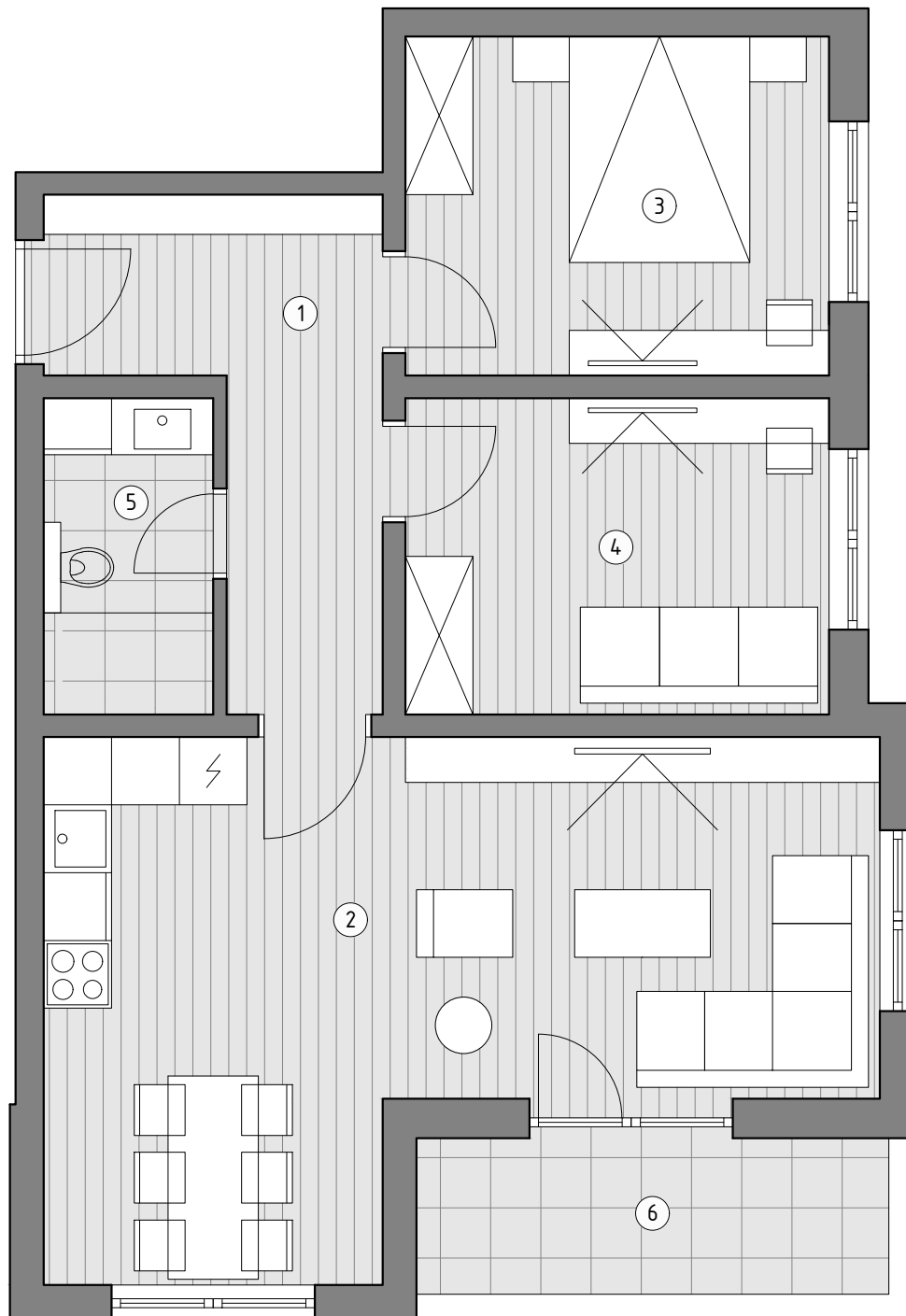


OSNOVA STANA 5 / 11 / 17 / 23  
 P= 67.07 m<sup>2</sup>



STANOVI 5, 11, 17, 23

- |  |                         |
|--|-------------------------|
| 1. Hodnik                                      | P= 8.67 m <sup>2</sup>  |
| 2. Dnevni boravak sa<br>trpezarijom i kuhinjom | P= 27.77 m <sup>2</sup> |
| 3. Spavaca soba 1                              | P= 10.91 m <sup>2</sup> |
| 4. Spavaca soba 2                              | P= 10.18 m <sup>2</sup> |
| 5. Kupaćilo                                    | P= 3.95 m <sup>2</sup>  |
| 6. Balkon                                      | P= 5.59 m <sup>2</sup>  |

Ukupno..... P= 67.07 m<sup>2</sup>

POZICIJA STANA U ZGRADI

