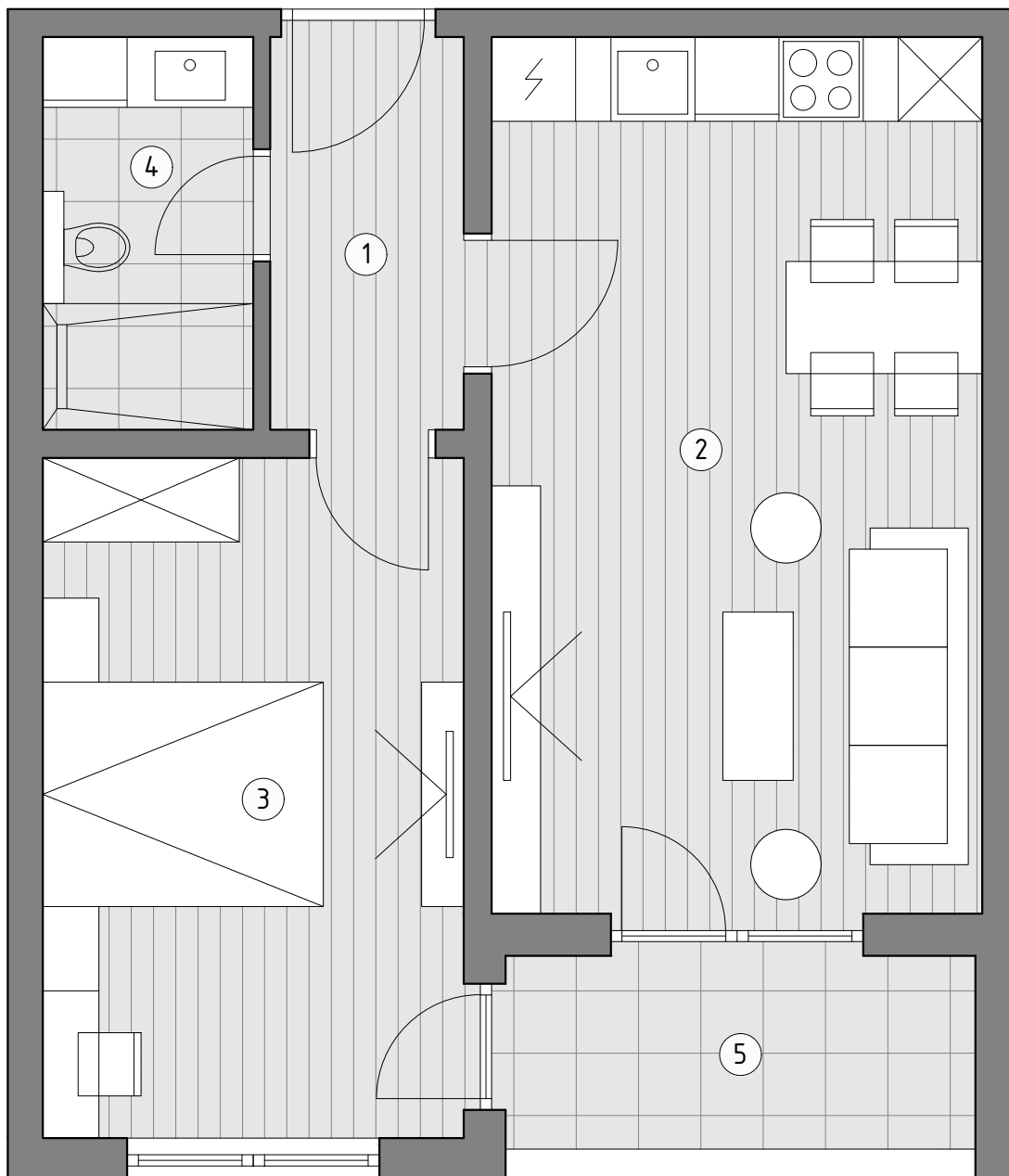


OSNOVA STANA 4 / 10 / 16 / 22  
 P= 47.49 m<sup>2</sup>



STANOVI 4, 10, 16, 22

- |  |                         |
|--|-------------------------|
| 1. Hodnik                                      | P= 3.74 m <sup>2</sup>  |
| 2. Dnevni boravak sa<br>trpezarijom i kuhinjom | P= 21.21 m <sup>2</sup> |
| 3. Spavaca soba                                | P= 14.11 m <sup>2</sup> |
| 4. Kupatilo                                    | P= 3.95 m <sup>2</sup>  |
| 5. Balkon                                      | P= 4.48 m <sup>2</sup>  |

Ukupno..... P= 47.49 m<sup>2</sup>

POZICIJA STANA U ZGRADI

