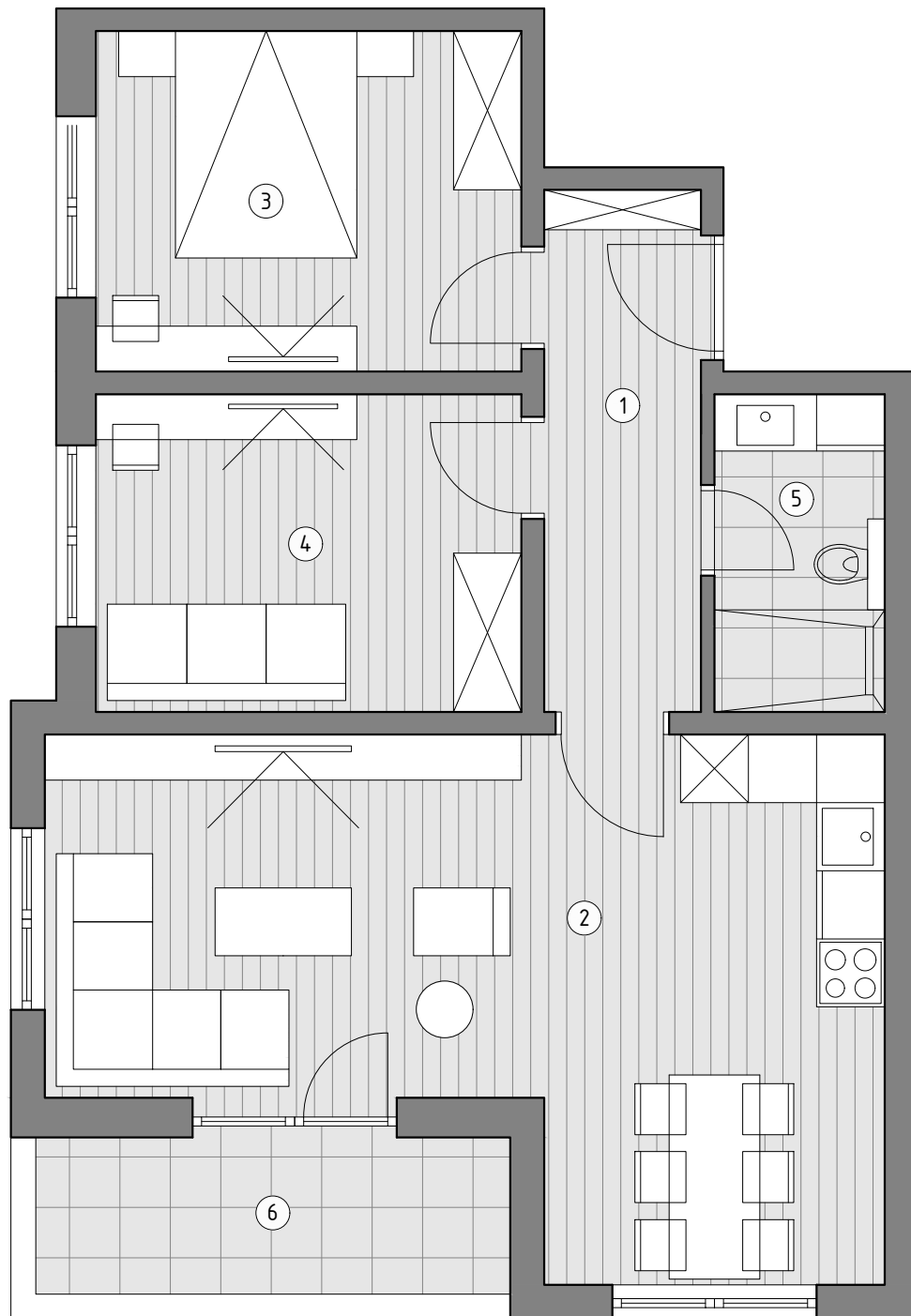


OSNOVA STANA 2 / 8 / 14 / 20  
 P= 64.55 m<sup>2</sup>



STANOVI 2, 8, 14, 20

- |  |                         |
|--|-------------------------|
| 1. Hodnik                                      | P= 6.15 m <sup>2</sup>  |
| 2. Dnevni boravak sa<br>trpezarijom i kuhinjom | P= 27.77 m <sup>2</sup> |
| 3. Spavaca soba 1                              | P= 10.91 m <sup>2</sup> |
| 4. Spavaca soba 2                              | P= 10.18 m <sup>2</sup> |
| 5. Kupatilo                                    | P= 3.95 m <sup>2</sup>  |
| 6. Balkon                                      | P= 5.59 m <sup>2</sup>  |

Ukupno..... P= 64.55 m<sup>2</sup>

POZICIJA STANA U ZGRADI

