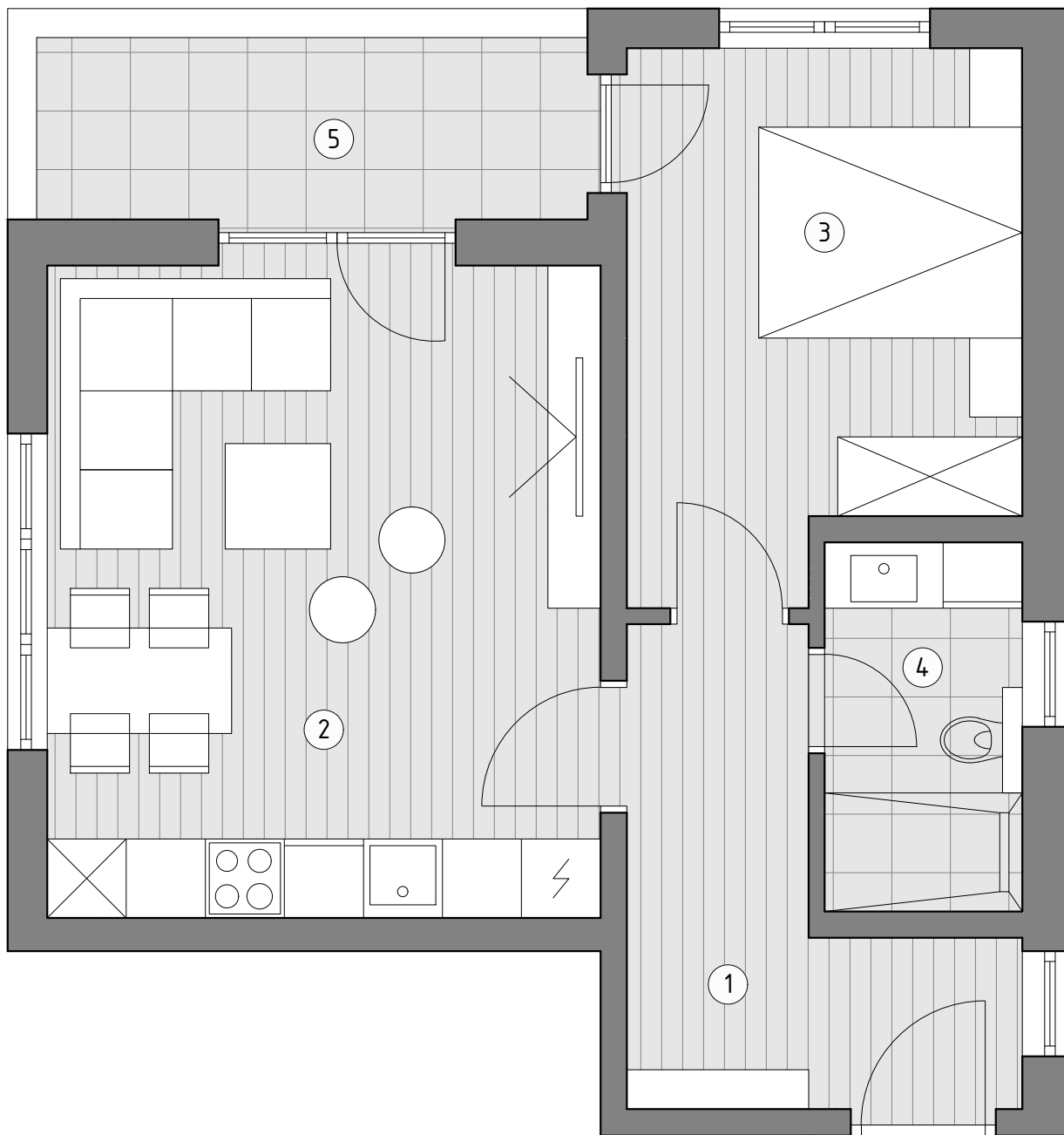


OSNOVA STANA 1 / 7 / 13 / 19  
 P= 47.92 m<sup>2</sup>



STANOVI 1, 7, 13, 19

- |  |                         |
|--|-------------------------|
| 1. Hodnik                                      | P= 6.96 m <sup>2</sup>  |
| 2. Dnevni boravak sa<br>trpezarijom i kuhinjom | P= 20.16 m <sup>2</sup> |
| 3. Spavaca soba                                | P= 11.26 m <sup>2</sup> |
| 4. Kupatilo                                    | P= 3.95 m <sup>2</sup>  |
| 5. Balkon                                      | P= 5.59 m <sup>2</sup>  |

**Ukupno..... P= 47.92 m<sup>2</sup>**

POZICIJA STANA U ZGRADI

